



Double Monitor Arms - F-D-Ergo





Double Monitor Arms - F-D-Ergo



- Screen Size**
17"-32"
- Weight Capacity**
8 kg/19.8lbs
- VESA Compatible**
75x75 100x100
- Tilt Range**
+90°--90°
- Swivel Range**
+90°--90°
- Screen Rotation**
360°
- Cable Management**



Double Monitor Arms - F-D-Ergo



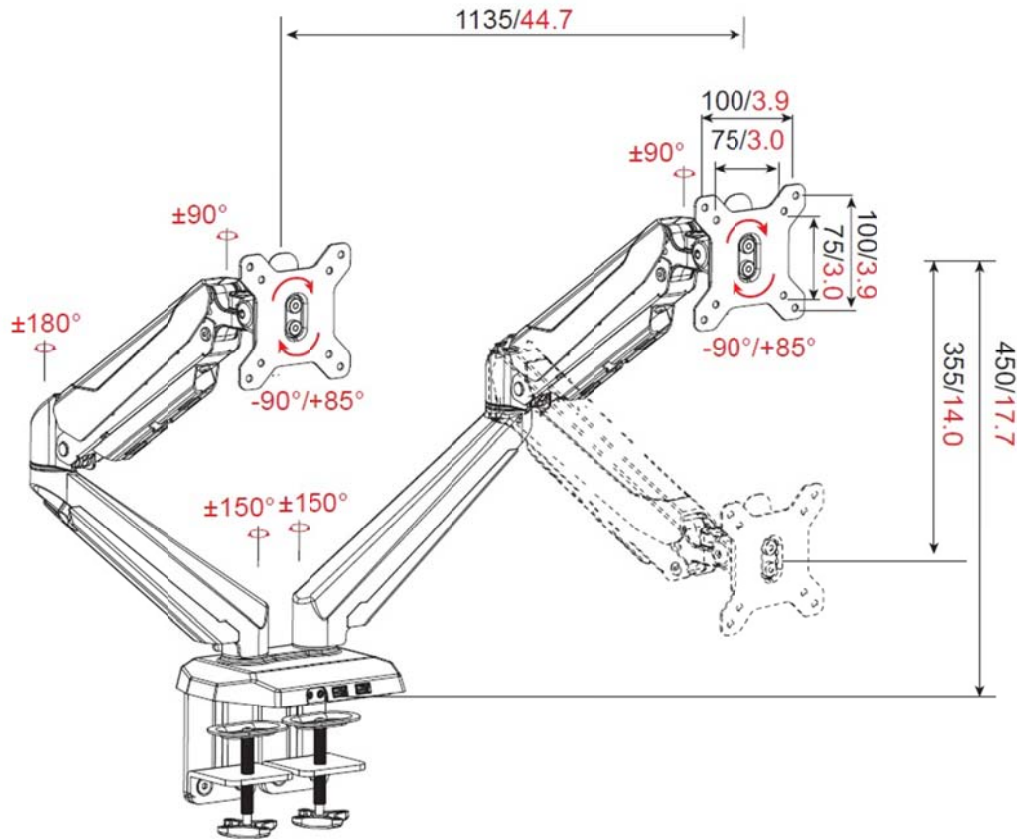


Double Monitor Arms - F-D-Ergo





Double Monitor Arms - F-D-Ergo



Model: F-D-Ergo (**Dynamic Spring Mechanism**)

Type: Grommet and Clamp

Colour: Black

(Come With 1 x Media Port and 2 x USB)

Specifications:

***Screen weight range (1kg~8kg)**

***Media Port and 2 x USB**

*Dual monitor support with double arms linked

*Screen quick release type

*Cable Management

*360° monitor rotation, swivel +90° ~ -90°, tilting +90° ~ -90° (**screen can be tilted to flat**)

*Available with both 75mm and 100mm VESA brackets

*Laptop holder as an option (mounting of laptop)

*Clamp and Grommet Parts supplied together



Double Monitor Arms - F-D-Ergo-Pole





SINGAPORE INTERIOR PTE LTD

124 Lor 23 Geylang, #08-01/02 Arcsphere(Lift Lobby 2), Singapore 388405

sales@singaporeinterior.com 6323 9213 6741 3190

Singapore Interior Design & Furniture Hub | www.singaporeinterior.com

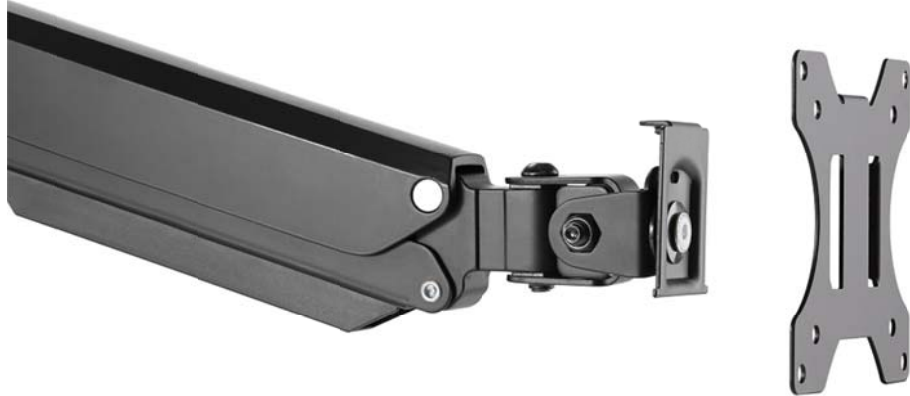


Double Monitor Arms - F-D-Ergo-Pole





Double Monitor Arms - F-D-Ergo-Pole



Made With High Quality Aluminum,
Powder Coated Rust Free

Dynamic Spring Mechanism Inside



Pole Type
For Wider
Range Of
Height
Adjustmen

Quick Release Vesa Plates

Cable Management
Come With 2 x 3.0 USB for Fast
Charging & Data Transfer

Both Clamp & Grommet Parts Provided

 75x75 100x100	 360°	 +45° ~ -45°	 90° ~ 90°
 Gas Spring	 Cable Management	 USB Port	 Curved Monitor



Double Monitor Arms - F-D-Ergo-Pole



Model: F-D-Ergo-Pole (**Dynamic Spring Mechanism**)

Type: Grommet and Clamp

Colour: Black

(Come With 2 x USB 3.0)

Specifications:

- *Screen weight range (0kg~8kg)
- *2 x USB3.0 – Charging and Fast Data Transfer
- *Dynamic Spring Mechanism (Easy Height Adjustment)
- *Pole Type Allows More Height Adjustment
- *Dual monitor support with double arms stretch
- *Cable Management
- *360° monitor rotation, swivel +90° ~ -90°, tilting +90° ~ -90° (**screen can be tilted to flat**)
- *Available with both 75mm and 100mm VESA brackets
- *Laptop holder as an option (mounting of laptop)
- *Clamp and Grommet Parts supplied together

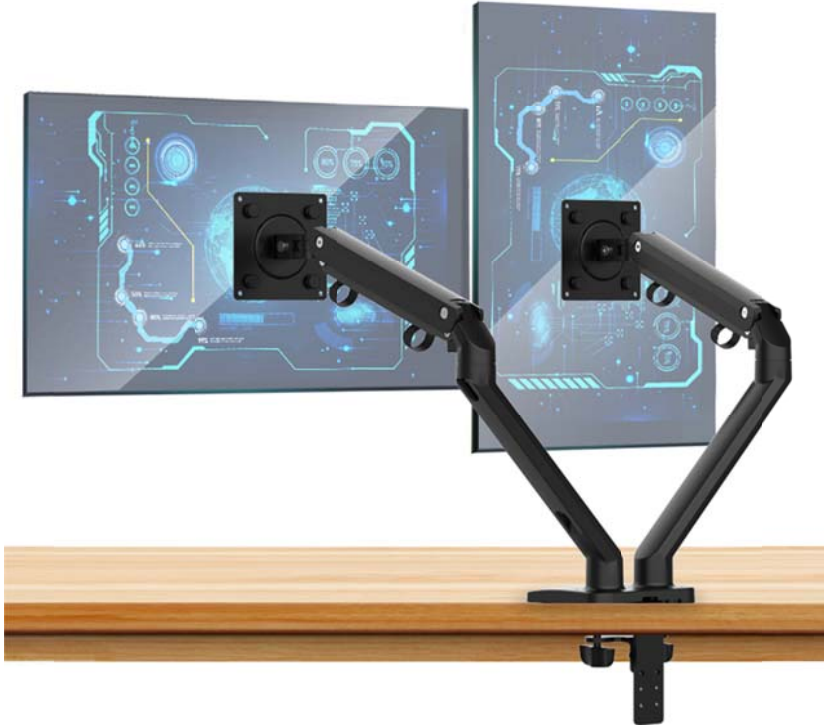


Double Monitor Arms – Dynamic Spring Mechanism





Double Monitor Arms – Dynamic Spring Mechanism



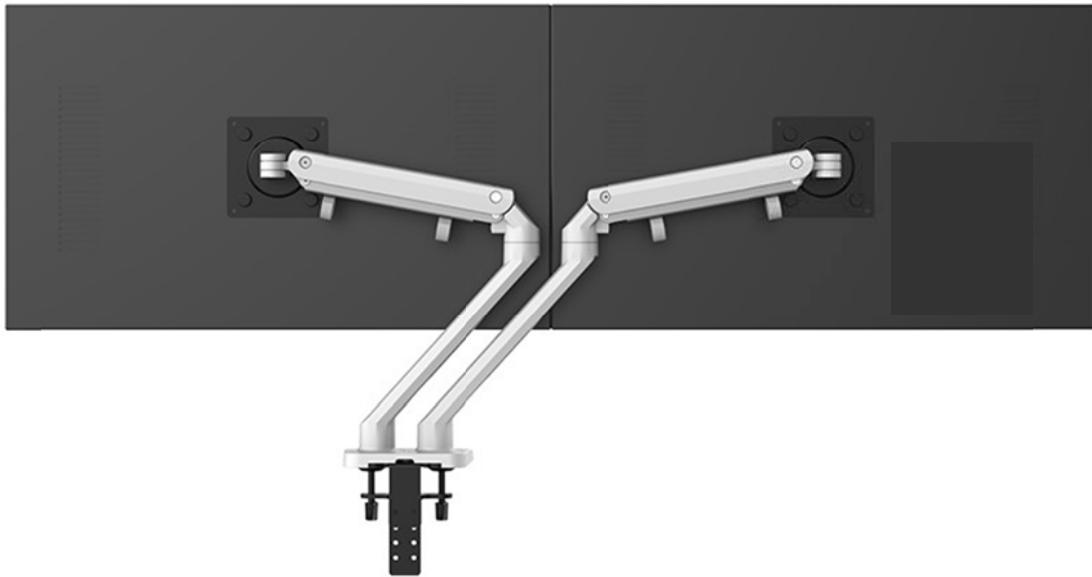


Double Monitor Arms – Dynamic Spring Mechanism



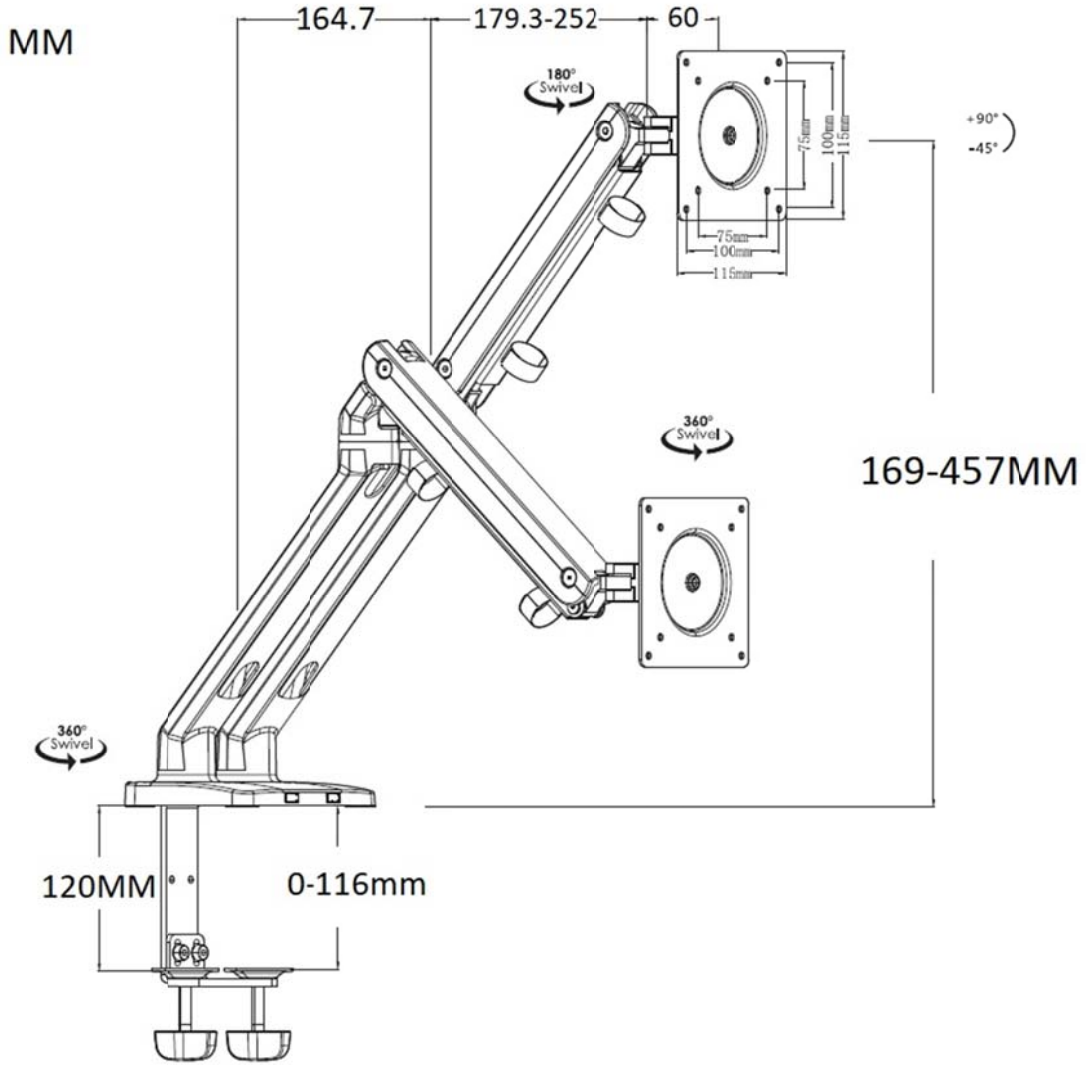


Double Monitor Arms – Dynamic Spring Mechanism





Double Monitor Arms – Dynamic Spring Mechanism



- 
Screen Size
 17"-32"
- 
Weight Capacity
 9kg/19.8lbs
- 
VESA Compatible
 75x75 100x100
- 
Tilt Range
 +90°--90°
- 
Swivel Range
 +90°--90°
- 
Screen Rotation
 360°
- 
Cable Management



SINGAPORE INTERIOR PTE LTD

124 Lor 23 Geylang, #08-01/02 Arcsphere(Lift Lobby 2), Singapore 388405

sales@singaporeinterior.com 6323 9213 6741 3190

Singapore Interior Design & Furniture Hub | www.singaporeinterior.com



PORTFOLIO
UEN : 200612547K

Double Monitor Arms – Dynamic Spring Mechanism

Model: F-D-DS (**Dynamic Spring Mechanism**)

Type: Clamp Type Only

Colour: Black or White

(Come with 2 x USB)

Specifications:

***Screen weight range (0kg~8kg)**

***Come With 2 x USB**

***Dynamic Spring Mechanism (Easy Height Adjustment)**

*Dual monitor support with double arms stretch

*Cable Management

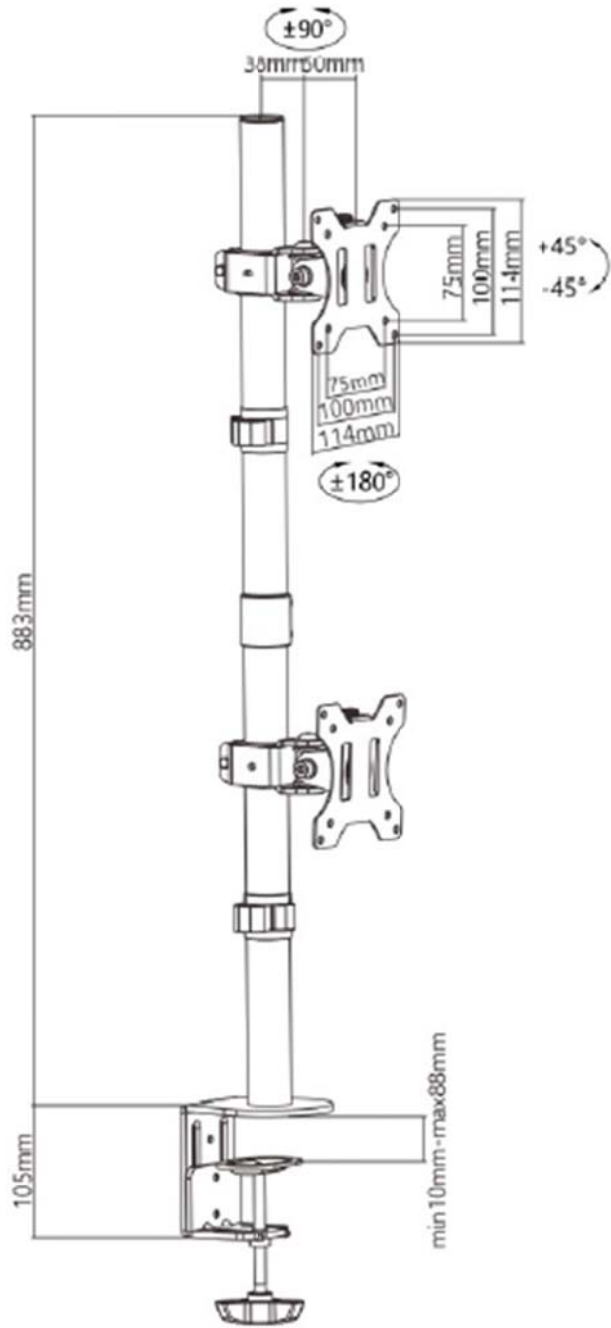
*360° monitor rotation, swivel +90° ~ -90°, tilting +90° ~ -90° (**screen can be tilted to flat**)

*Available with both 75mm and 100mm VESA brackets

*Laptop holder as an option (mounting of laptop)



Vertical Double Monitor Arms – Grommet & Clamp





Vertical Double Monitor Arms – Grommet & Clamp



Screen Size
13"-32"



Weight Capacity
8kg/17.6lbs



VESA Compatible
75x75 100x100



Tilt Range
+45°--45°



Swivel Range
+90°--90°



Screen Rotation
360°



Cable
Management

Model: F-D-VP

Type: Grommet and Clamp

Colour: Black

Specifications:

- *Screen weight max 8kgs
- *Double monitor support with double arms linked
- *Clamp:10-88mm
- *Screen quick release type
- *Cable Management
- *360° monitor rotation, tilting +40° ~ -45°
- *Available with both 75mm and 100mm VESA brackets
- *Laptop holder as an option (mounting of laptop)
- *Clamp and Grommet Parts supplied together